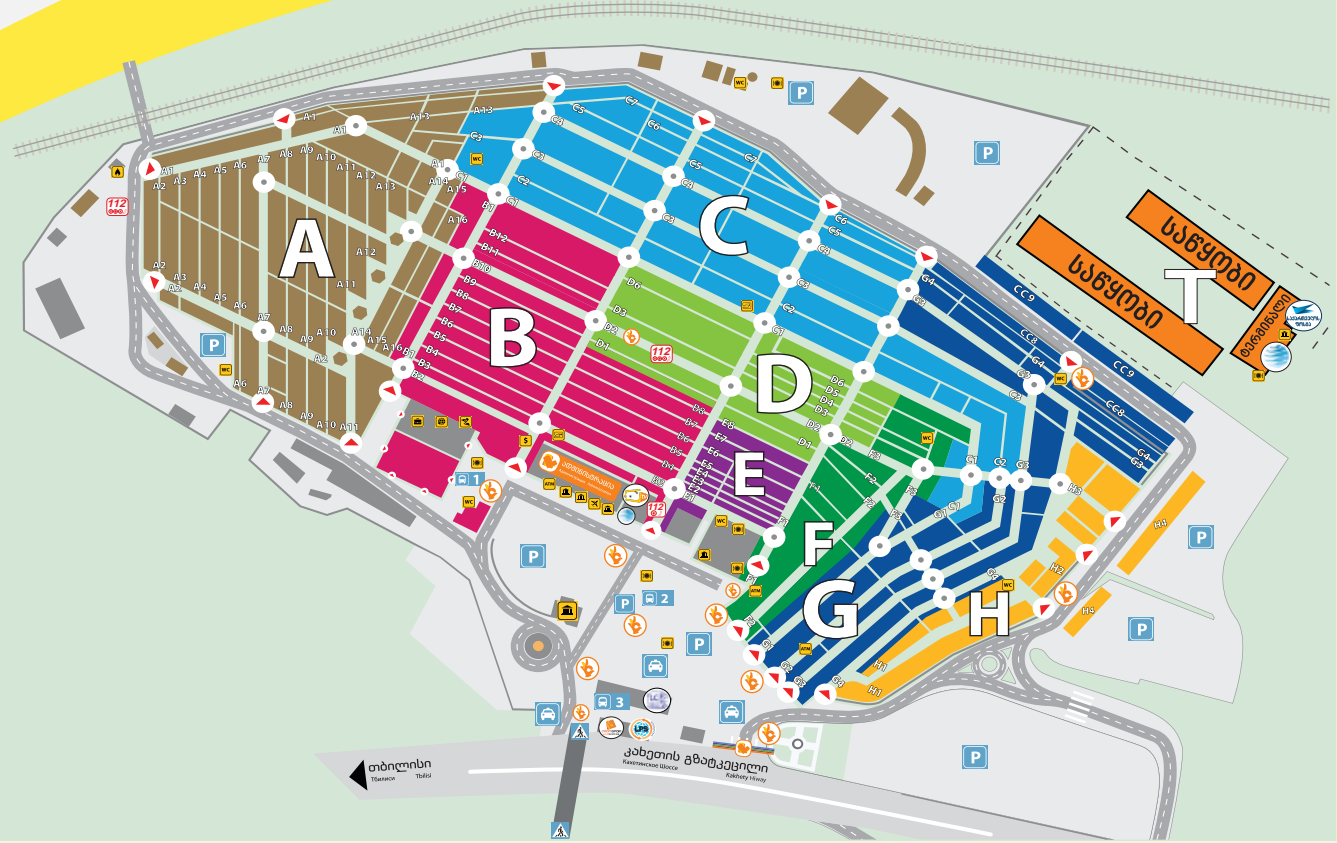




Everything here for you!

ლილო მალი
LILO MALL
Since 1991



298.000

Customers visit Lilo Mall every year



COCO BOCO
LILO MALL
Since 1991





Parking

■ Customers cars
number per month:

62 250

■ Bus number entered
Lilo Mall every month

216 750

Advertising at Lilo Mall

You can choose different advertising channels at Lilo Mall:

- Billboards on the territory
- Banners on the territory
- Monitors on the territory and also from the side of the highway
- Placement of advertising on monitors between rows (28 monitors)
- Distributing advertising flyers in the area;
- Placement of advertisements on television Lily Mall (L TV);
- Placement of advertising on the Lilo Mall social media page Networks (Facebook, Instagram ...);

OUTDOOR COMMUNICATION

Billboards
on the territory

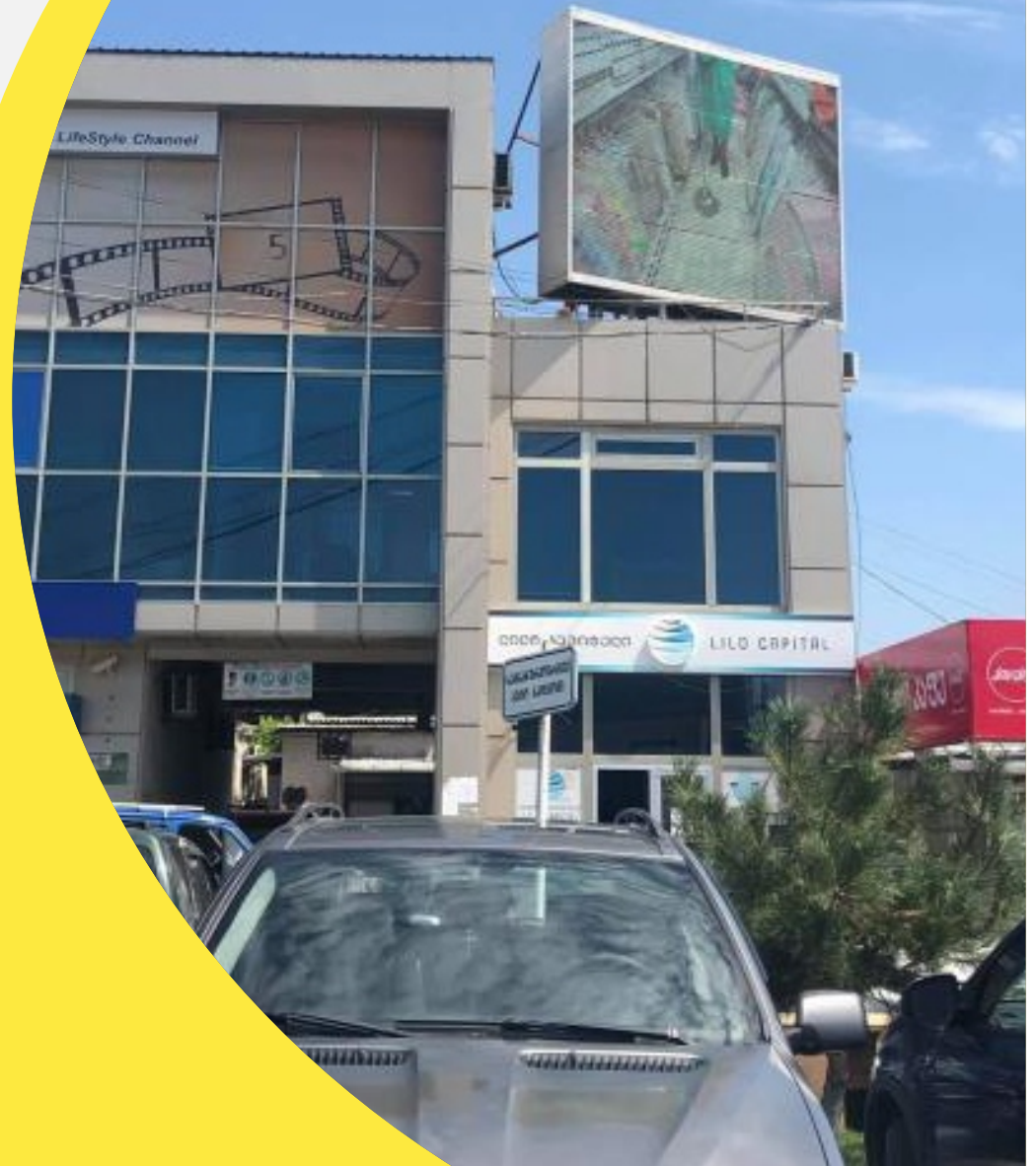


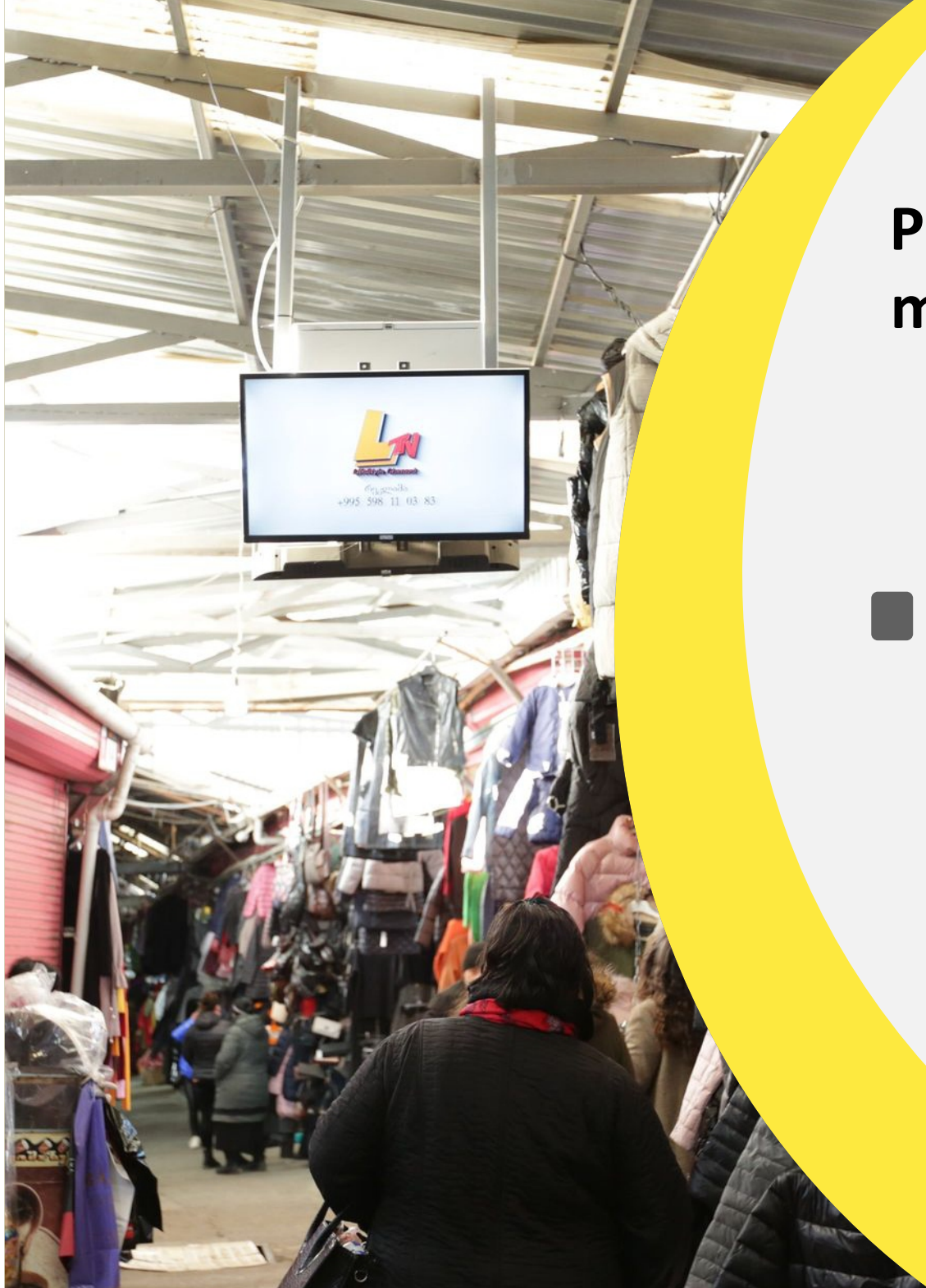
Lightboxes
on poles



Advertising on monitors

- 2 outdoor monitors are installed in the shopping center





Placement of advertising on monitors between rows

- 28 inner monitors are installed between trade rows, at Lilo Mall

Distribution of brochures on the territory of Lilo Mall

- Flyers Attachment on the car's windshield at the parking area
- Distribution of flyers to walking customers
- Distribution of flyers to store owners and sales staff





www.lilomall.ge